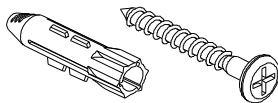
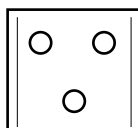


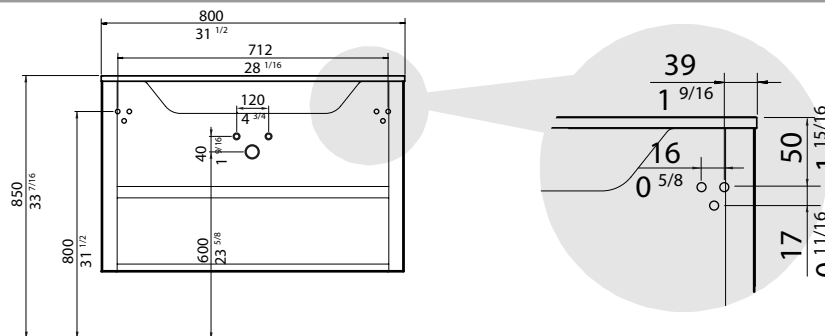
6x



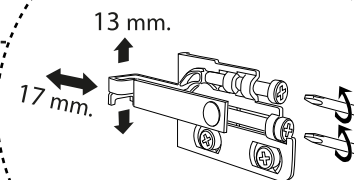
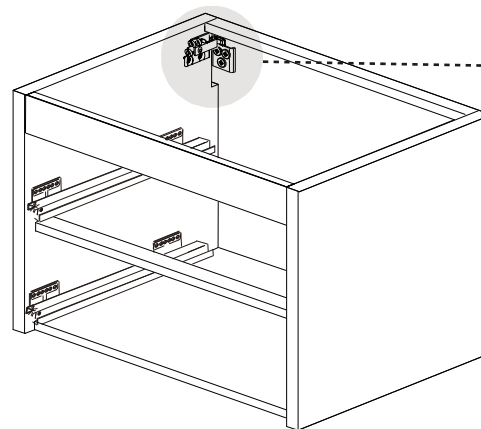
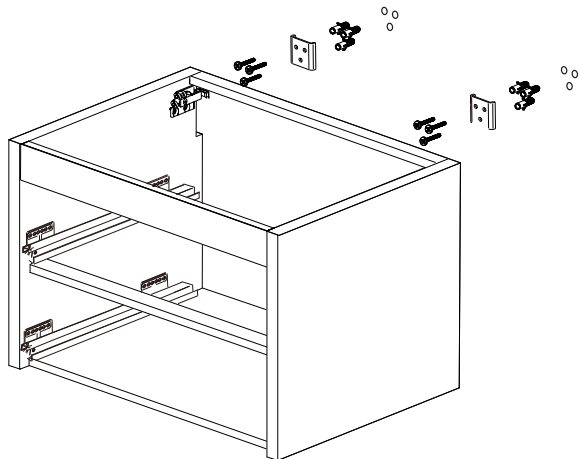
2x



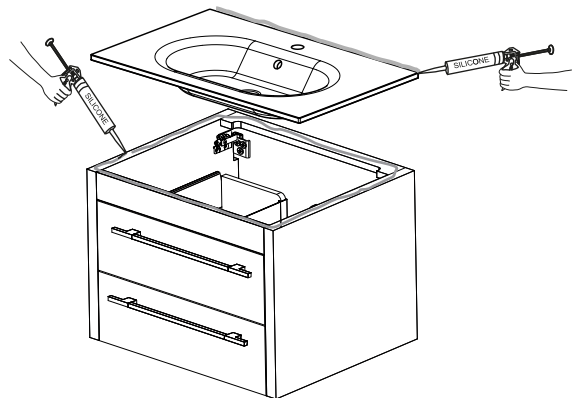
**1**



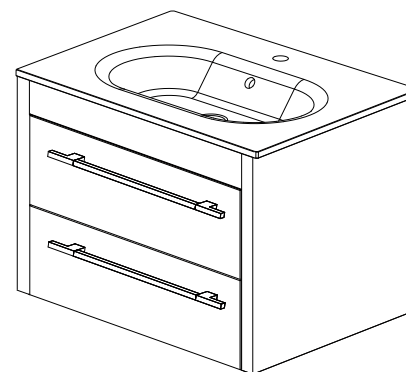
**2**



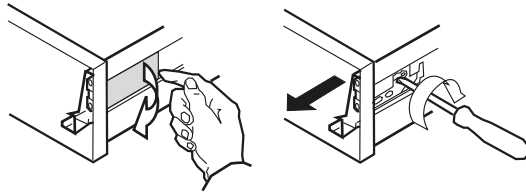
**4**



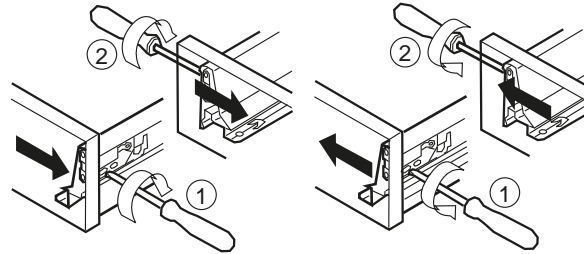
**6**



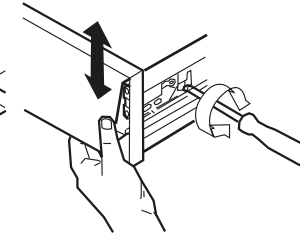
Desmontaje frente cajón  
Take apart the front part  
Desinstallation de la façade du tiroir



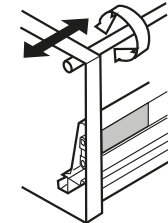
Ajuste lado  
Side Adjustment  
Réglage côté



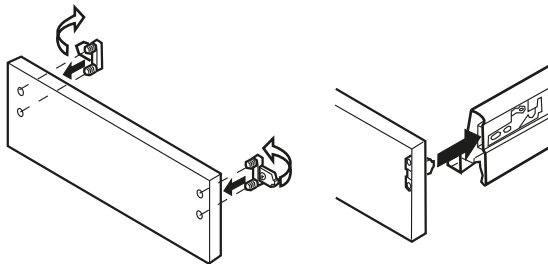
Altura  
Height  
Hauteur



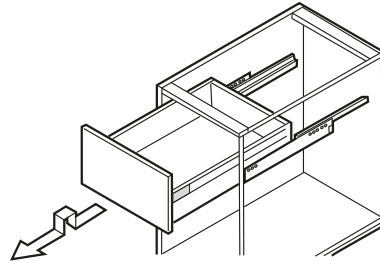
Inclinación  
Inclination  
Inclinaison



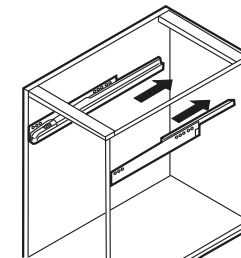
Montaje frente cajón  
Assembly front part  
Installation de la façade du tiroir



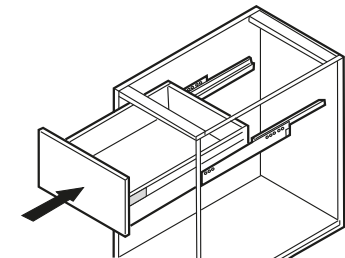
Enganche y desenganche del cajón  
Hanging and unhooking of the drawer  
Enclenchement et desencenchement du tiroir



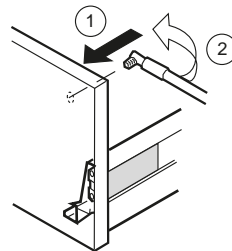
Desenganche  
To unhook  
Desenclenchement



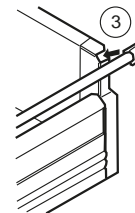
Colgar  
To hung  
Suspendre



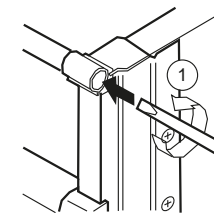
Barra suplemento  
Supplementary bar  
Barre de maintenance



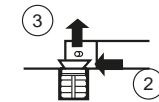
Montaje parte delantera  
Assembly front part  
Installation de la partie avant



Montaje parte trasera  
Assembly back part  
Installation de la partie arrière



Desmontaje parte trasera  
Take apart front part  
Desinst. de la partie arrière



Desmontaje parte delantera  
Take apart back part  
Desinst. de la partie avant