



residence
kitchen range specifications

PORCELANOSA KITCHENS

why working with PORCELANOSA KITCHENS

Production CAPACITY

GAMADECOR's furniture manufacturing facilities cover an area of 135,000 m2, with a work system conceived to adapt the work load to its production capacity.

Cutting-edge TECHNOLOGY and DESIGN

GAMADECOR uses state-of-the-art machinery to manufacture its furniture. It also conducts ongoing studies of design trends, as demonstrated by the prestigious international design awards that it has received, such as Good Design, Red Dot or If design.

Made in EUROPE

GAMADECOR's furniture is fully manufactured in Spain and the cabinet hardware for all its products is made by leading European brands. All the board that it uses are sourced from controlled forests. This guarantees that it is harvested from responsibly managed forests in accordance with sustainable tree-felling criteria.

AFTER-SALES service

GAMADECOR is committed to offering quality and first-class service to customers. To meet this goal, it offers a speedy, efficient after-sales service through all official distributors of PORCELANOSA GRUPO in the almost 100 countries in which it operates.

The BRAND

The assurance of PORCELANOSA Grupo, a major business group that has forged a leading reputation both in Spain and abroad, supplying products to more discerning market segments.

ALL-ROUND consultancy advice

PORCELANOSA Grupo is present in almost 100 countries worldwide, offering an all-round design, onsite supervision and assembly service, with total dedication to the task thanks to its extensive team of staff.

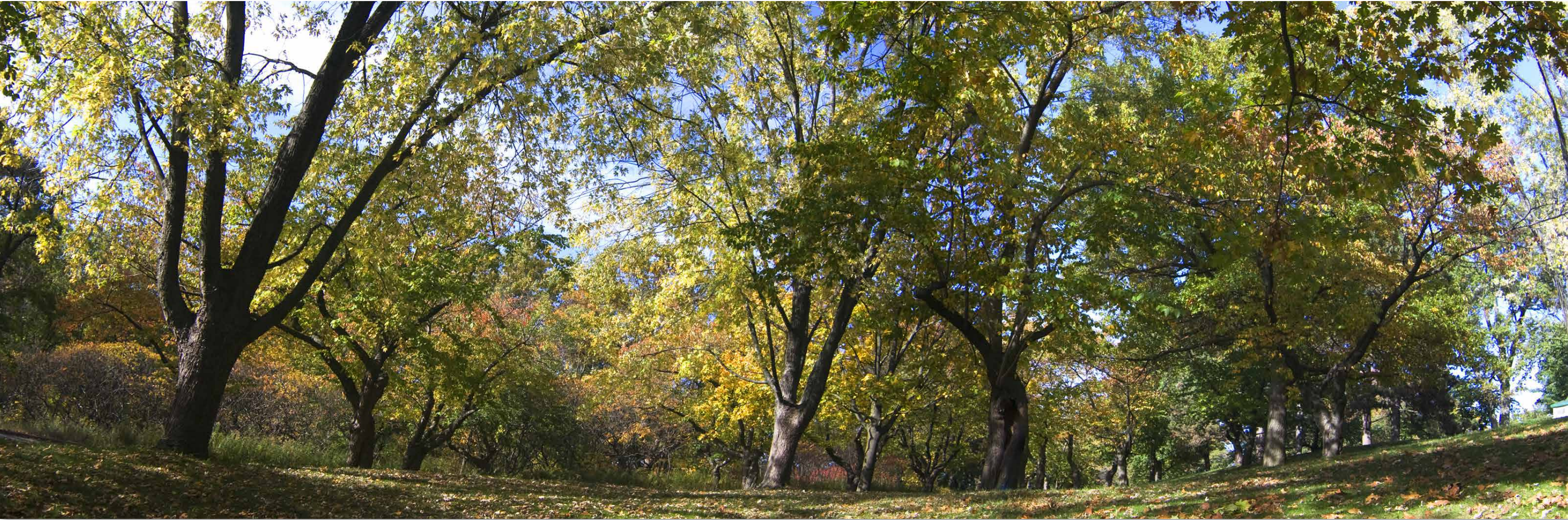
A choice of PRODUCT RANGES

GAMADECOR offers a choice of three different kitchen collections and their corresponding models to meet differing kitchen design requirements. In addition to its kitchen furniture, GAMADECOR also manufactures a wide range of bathroom and living furniture, wardrobes and walk-in closets.

Assured QUALITY

Each of PORCELANOSA Grupo's different companies offer the assurance of superior quality, endorsed by nearly 50 years' experience manufacturing top-quality products able to pass the strictest resistance and stress tests.





ECOLOGICAL commitment

Sustainability – that is achieving a balance between human development and the conservation of natural resources – is a key priority for GAMADECOR. It is one of the main driving forces behind initiatives like the implementation of different environmental management systems over the years, ongoing improvements to the efficiency of the company's production systems, and the progressive elimination of plastic from its packaging. This has led to a dramatic reduction in the environmental impact that GAMADECOR makes, and the company aims to continue reducing it through ongoing improvements in the field of sustainability.

On the one hand, an Environmental Management System has been set in place, based on the international ISO 14001 standard. Thanks to this system, environmental aspects of all GAMADECOR's activities and their associated impacts can be more easily identified and improved on, in addition to fostering environmental protection and the prevention of pollution.

On the other, GAMADECOR is an FSC® certified company. This means that its raw materials are certified as complying with the FSC® chain of custody system, hence ensuring that all the wood used in the company's furniture comes from properly managed forests where trees are felled in accordance with sustainable criteria.

Carbon footprint analyses are another important initiative in the field of environmental management. They consist of measuring all the company's direct and indirect greenhouse gas emissions from all walks of its activities so that specific measures can be introduced to reduce and/or offset the impact of greenhouse gas emissions.



More ENVIRONMENTALLY FRIENDLY raw materials

The particleboard in GAMADECOR's cabinets is made of 72% recycled content, with the circular economy accounting for 49% and sawmill residues (by-products) for 23% of this figure.

This 49% from the circular economy is made up of furniture, doors and other wood remains that are taken to recycling centres.

By using recycled material, GAMADECOR avoids the felling of over 14,334 trees a year, which are capable of absorbing 4.796 tons of CO2, equivalent to over 2,940 flights between Madrid and New York.

All GAMADECOR's furniture contributes to the circular economy, because the materials can be re-used to make new furniture.

When the board is cut and processed, 86,000 kg of extremely clean sawdust is generated. This is used as BIOMASS (renewable energy). All the remnant pieces of chipboard (1,400 tons) are ground up again and mainly re-used in the manufacture of new board.

 72% RECYCLED MATERIAL

=

 14.334 SAVED TREES

=

CO₂ 4.796 TN ABSORBED BY TREES

=

 2.940 FLIGHTS: MADRID → NEW YORK

NOTE: These figures were calculated using Gamadecor's production statistics for 2019.

General features

Presentation of RESIDENCE kitchens.

The Residence kitchen collection by PORCELANOSA is conceived for more exacting kitchen design projects, requiring high-performance features. It is made of board from sustainably harvested forests, with first-class cabinet fittings by leading European brands. The collection is fully manufactured in Spain.

MADE IN EUROPE, using top-quality processes.

PORCELANOSA's kitchens are fully manufactured in Europe in accordance with meticulous quality controls.



MODULES ADAPT to household appliances.

Oven or refrigerator column modules 100% configurable so a precise integration is achieved with a more refined aesthetics of any appliance because does not require trimming or finishing to cover gaps in standard sizes. Also, a concealed ventilation pedestal has been designed, in order to replace the unattractive ventilation grilles. This pedestal supports the weight of the refrigerator and favours ventilation, increasing its useful life.

Rugged and stylish ALUMINUM PLINTHS.

The plinths are made of extruded aluminium, a material with a high resistance to rust. They also feature a rubber seal along the bottom to protect them from small spillages of water. The plinths can be removed since they are clipped to the legs of the units, making it easy to clean underneath them.

A wide variety of LAMINATE and HPL finishes.

In conjunction, the different laminate and HPL finishes in the Residence collection come in a wide variety of colours. In a laminate finish, there is a choice of:

- Plain colours in a matt finish or an imitation wood finish with a textured surface. These finishes come with ABS edgebanding, bonded to the board with PUR adhesive, which can withstand temperatures of up to 150°C.

-New finishes in silky-feeling matt colours that imitate a lacquer finish. They are laser edged with polypropylene so as to ensure a resistant, watertight, almost invisible seam.

In an HPL finish, there is a choice of:

-Bright colors with shades that follow the latest design trends, that imitate a lacquer finish. They are laser edged with polypropylene so as to ensure a resistant, watertight, almost invisible seam.

LAMINATE				HPL	
PUR adhesive edgebanding				LÁSER edged	
Plain colours	Wood imitation, Eucalyptus	Wood imitation, Etimoe	Wood imitation, Roble	Matt finish, silky-feeling	Gloss finish
		Wood imitation, Walnut			

A wide variety of FRONT and INTEGRATED HANDLES.

Residence kitchens come with a wide choice of handles, including metal front handles, integrated metal grips for a highly contemporary look, or edgemachined handles using softforming technology to mould the edge of the board as required, leading to kitchens with a clear-cut minimalist design.



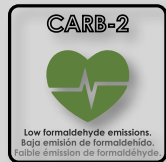
ORGANIZERS AND INNER STORAGE solutions to suit all tastes.

The Residence kitchen collection features a wide range of organizational and storage alternatives, including drawer and deep drawer organizers, so as to make optimum use of the available space and make it easier to arrange and reach the utensils or food products at any time.



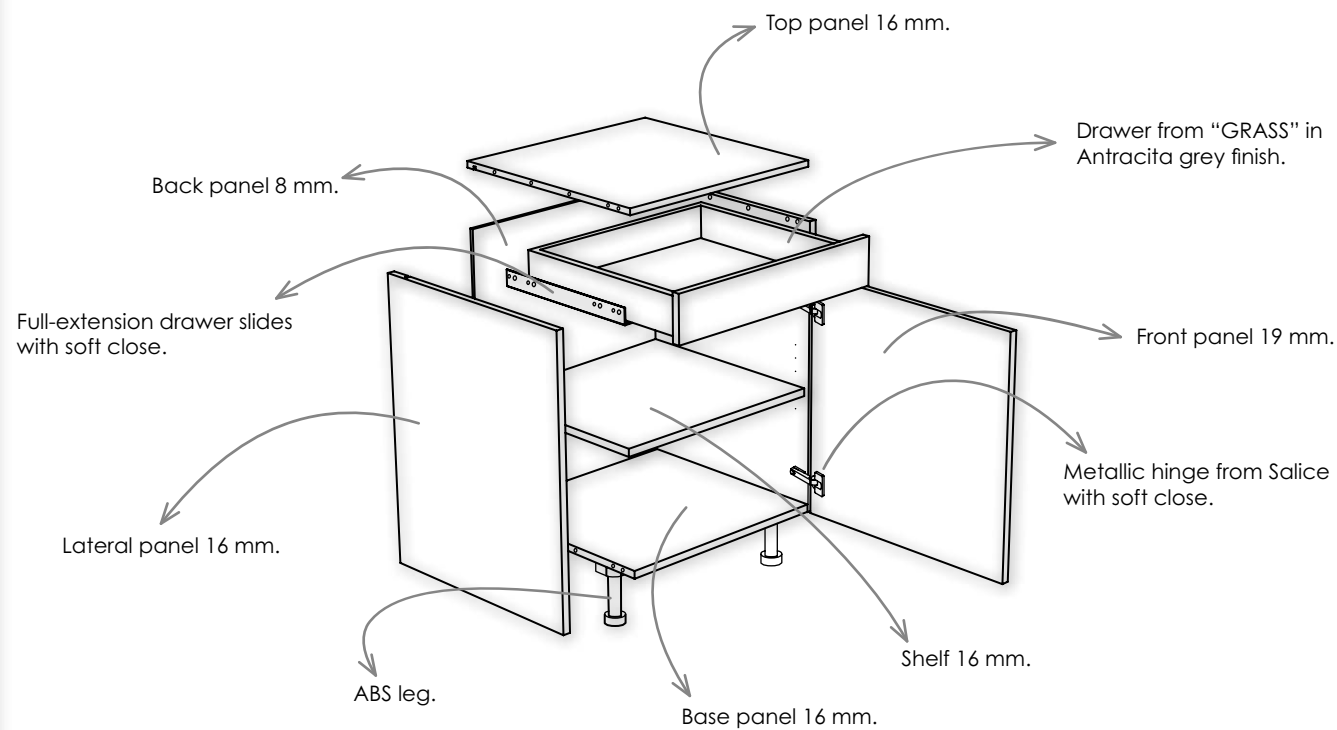
HIGH-RESISTANCE board to cope with demanding conditions.

The carcasses of Residence kitchen units are made of water resistant, high resistance, 16 mm thick particleboard board with a CARB-2 formaldehyde emission rating and FSC® certified, which guarantees the responsible use of wood. Because they are water resistant, they are more resistant to moisture, which provides greater protection and makes them less vulnerable to the effects of water with the passage of the years. Furthermore, the edges are covered in watertight ABS edgebanding, bonded to the board with PUR adhesive, which has a high resistance to impacts and ability to withstand temperatures of up to 150°C.



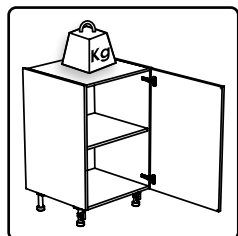
CARB-2 / EPA rated board with ultra low emission of formaldehyde.

The panels used in carcasses are even more health-conscious thanks to the lowest formaldehyde emission certified in the CARB II (ATCM 93120) / EPA (US EPA TSCA Title VI) in Formaldehyde emission.



MAXIMUM STABILITY guaranteed.

Residence kitchens by GAMADECOR offer the assurance of robust resistance and greater stability thanks to their construction, using hard wood dowels to assemble the components, glued at the same time as the thicker-than-normal (8mm) back panel is inserted. The end result is a compact, highly stable ensemble. The weight is also equally distributed through the side panels and base down to the highly-resistant ABS legs, which are height adjustable. This prevents the unit from gradually sagging due to the weight of the countertop, again ensuring long-lasting durability.



Top-quality cabinet hardware by LEADING EUROPEAN BRANDS

Residence kitchens feature the latest models in cabinet hardware by leading European brands. This leads to kitchens with cutting-edge mechanisms, made of top-quality materials, with the guarantee of manufacturers that have been innovating for decades and improving the resistance and performance of these systems.



MORE CONVENIENT drawers.

The drawers and deep drawers are made using the latest Nova Pro Scala model by Grass, which features aluminium sides, dark grey finish, and full-extension soft-close drawer runners. This protects the unit from impacts if the drawers slam shut, preventing the unit from breaking before it reaches the end of its useful life. The drawers can also withstand weights of up to 80 kg and they have passed the most demanding tests, with open-close cycles that surpass the 60,000 cycles required in the corresponding standard.



HIGHLY ROBUST hinges.

Top-range Silentia 700 hinges by Salice are used for the doors. These are fully metallic and three dimensionally adjustable, with a high resistance to moisture, a simple clip system for mounting or removing the doors and, like the drawers, they incorporate a soft-close system to protect the doors from impacts and thus extend the kitchen's useful life.

SOPHISTICATED shelf supports.

The highly resistant inner shelf supports feature an anti-tip mechanism, thus avoiding accidents if the shelf tips over and the objects fall off. The shelf supports are transparent, which helps to conceal them, and they are easy to remove if the shelves need adjusting to the required height in the side holes.

MORE RESISTANT wall hangers.

The wall units are hung from the wall using two TRASER 6 hangers by Indaux. These are fully metallic and can each withstand a weight of up to 65 kg (130 kg per unit). These fittings are concealed behind the back of the unit and they distribute the weight evenly between the top and sides to give it greater stability. They can be regulated from inside the unit to make it easier to position.



Residence

kitchen range specifications

GAMADECOR
PORCELANOSA Grupo

Gama-decor, S.A.U.:
Carretera Vila-real - Puebla de Arenoso CV-20 km 1,7
Aptdo/box 179 - 12540
Vila-real - Castellón - Spain

Teléfono: +34 964 506 850
Fax.: 964 506 596 Nacional
+34 964 506 597 International

www.gama-decor.com
e-mail: gama-decor@gama-decor.com

© Copyright GAMA-DECOR, S.A.U. All rights reserved.

GAMADECOR reserves the right to modify or cancel the information that appears in this catalogue concerning all aesthetic and technical aspects as well as pricing.

GAMADECOR reserves the right to modify the characteristics of its products without prior notice.

The finishes shown are only for informative purposes; all rights are reserved due to the possible differences resulting from printing. For that reason, the photos displayed of the products are not to be deemed contractually binding.

All rights are reserved for possible errors within the texts which appear in the catalogue due to the composition or insertion of the pages.

This catalogue is informative only.



The mark of
responsible forestry
FSC® C115389

